



REACTO[®] BioMimicry

Ultimate Solution For Remote Area
Sewage Treatment



www.reacto.in



Certified to EN12566-3

Technovation by :
awatech
transforming technologies



awatech

Transforming Technologies

AWATECH, founded in September, 2011; is a company with functional expertise who work on strategy ; efficiency and technological innovations based on local conditions and customer requirements.

Our mission is to operate consistently, allowing our clients to improve their community's health and safety by providing them innovative and brave solutions based on our industry knowledge and key business strategies

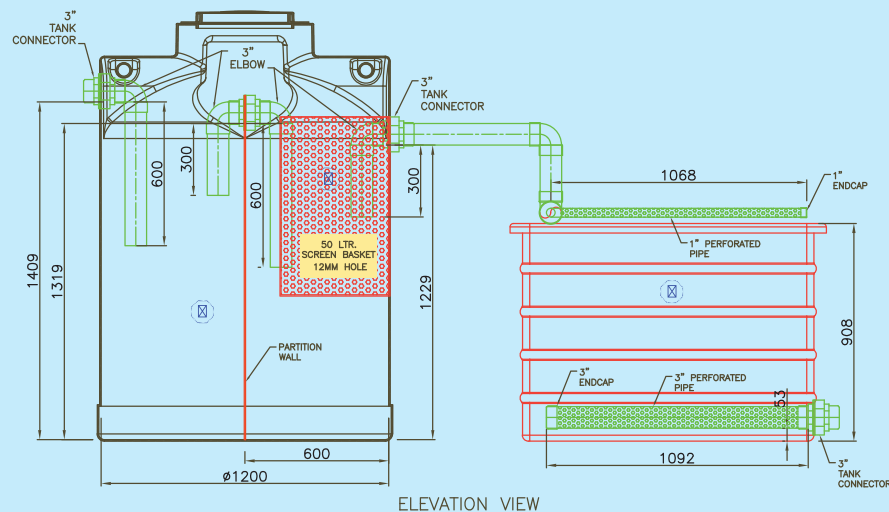
REACTO[®] BioMimicry

(Bio = related to nature + mimic = imitate)

AWATECH is offering the world a new way of thinking – a radical solution to an environmental challenge. This solution is finding a better, cheaper way to treat wastewater in the form of REACTO – BioMimicry, which is a scientifically designed system that seeks sustainable domestic wastewater treatment solutions by mimicking nature's time-tasted patterns & strategies.

Reacto – BioMimicry is able to treat most difficult contaminants and human waste water due to its natural process and by utilizing biodiversity. The results are meeting and even surpassing regulatory requirements!

Technical Specifications



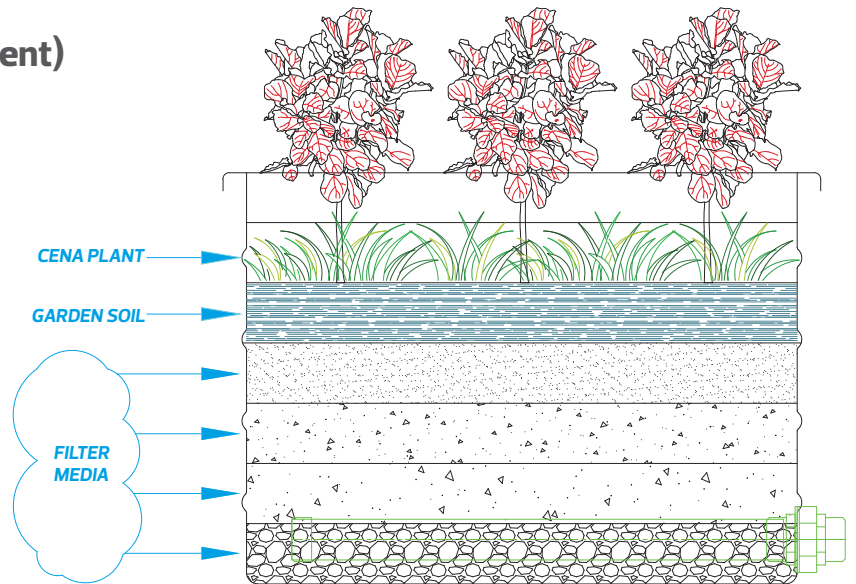
REACTO – BioMimicry – a simple & reliable 3 step system

Step 1 – EcoSept – the septic tank (primary treatment)

The much needed process; which allows bacteria to grow; and to consume contaminants with proper ventilation. It can handle all domestic wastewater (except infiltration); and with its integrated effluent filter, it traps all large materials and particles to protect React-BioFilter.

Step 2 – BioFilter (secondary treatment)

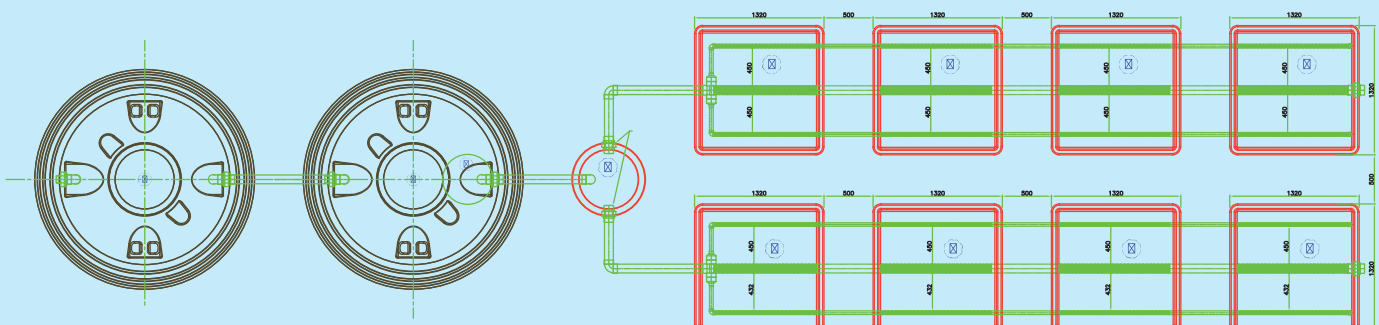
REACTO – BioFilter consists of root zone plants and a unique filter media bed further treats the primary treated water flowing from the EcoSept. The aerobic activity is concentrated near the plant roots as it is consuming oxygen from the plant roots as well as via the surface system; while anaerobic activity prevails at some distance within a unique filter media bed. These activities further reduces BOD, COD, TSS & Nitrogen in effluent & converts it into of reuse quality.



Step 3 – Release of treated wastewater

The treated wastewater is released by infiltration normally to the garden or it can be discharge to the surface as it complies with all regulations.

Completely modular system



Advantages

- Exceptionally compact
- Easy & speedy installation
- No energy required for treatment
- No equipment subject to failure
- Outlet at bottom or top (with pump)
- No treatment adjustment required
- Release to either garden or to surface discharge

Salient Features

- Easy 3 step system : EcoSept + BioFilter + Release
- EcoSept is specifically designed for tight spaces
- Modular system; multiple installations for large loads
- Can be installed over or under ground
- Supports load variations
- Completely Odour free
- Complies with standard EN 12566-3; BOD < 10, COD < 50, TSS < 10 can be achieved

REACTO[®] BioFilter

Max. hydraulic load (l/ day)	Qty	Width (mtr.)	Length (mtr.)	Height (mtr.)	Empty Weight(kg)
1200	1	1.2	1.2	0.9	46
2250	2	1.2	1.2	0.9	92
5500	4	1.2	1.2	0.9	184
8000	6	1.2	1.2	0.9	276
12000	8	1.2	1.2	0.9	368

REACTO[®] EcoSept (Septic tank)

SPECIFICATIONS	ST12	ST27	ST66	ST87		ST120	
Inhabitant Served(PE)	1 - 4	5 - 10	15 - 22	25 - 35		45 - 55	
Max hydraulic load(l/day)	1200	2250	5500	8000		12000	
Organic load (g BOD/day)	N/A	N/A	N/A	N/A		N/A	
NH3(g/per day)	N/A	N/A	N/A	N/A		N/A	
Total Capacity (Litres)	1200	2700	6600	T1	T2	T1	T2
				2240	1500	2240	2240
Diameter (mm)	1200	1500	2240	2430	1775	2430	2430
Height to ground level (mm)	1775	1775	2430	250	70	250	250
Empty plant weight (kg)	40	70	250	320		500	
Energy usage (kWh/day)	0	0	0	0		0	
Desludging interval (months)	12	12	12	12		12	