

# DOMESTIC SEWAGE TREATMENT MADE EASY!

NEVER BEFORE!

**5 Ultimate Solutions** from AWATECH to treat swage; all are unique in terms of process & applications.



## REACTO<sup>®</sup> BioMimicry

It mimics the nature of treating domestic wastewater. So, 100% environment friendly, no maintenance and zero energy consumption makes it ideal for remote areas, towns & villages. It's modular design can handle sewage from 5 to 500 inhabitants.

- ◆ Robust HDPE Material
- ◆ No Moving Equipment
- ◆ Easy & Speedy Installation
- ◆ Discharge to Garden or Surface

## REACTO<sup>®</sup> SBR

This cyclic batching process handles high volumes in very compact space. With low energy consumption & minimal maintenance, it's providing results to meet highest regulatory standards. Ideal for individual homes & establishments & even for large colonies, apartments & communes.

- ◆ Robust HDPE Material
- ◆ No Moving Equipment
- ◆ Easy & Speedy Installation
- ◆ Discharge to Garden or Surface

CE

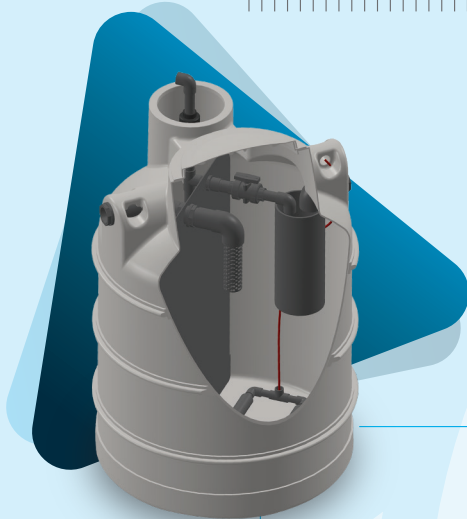
Certified to EN12566-3



## REACTO<sup>®</sup> EcoSept

EcoSept – the best solution to handle and treat sewage for urban, semi-urban & rural area domestic households without sewer connection. It Can handle up to 55 inhabitants.

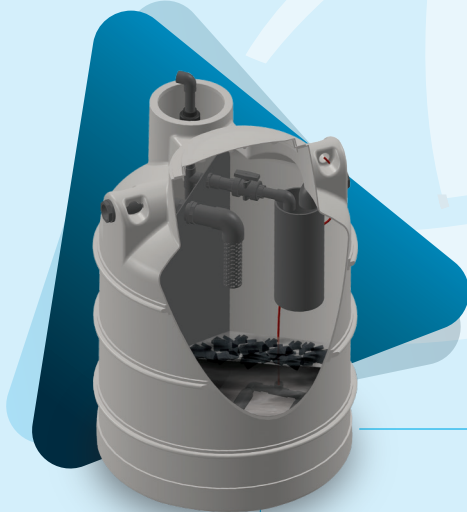
- ◆ Robust HDPE Material
- ◆ No Moving Equipment
- ◆ Easy & Speedy Installation
- ◆ Discharge to Garden or Surface



## REACTO<sup>®</sup> ASP

A single tank does it all. Designed with most modern techniques, this compact STP is unique because it's odor free, lowest in noise, low energy consumption and high performance; ideal for up to 90 inhabitants.

- ◆ Robust HDPE Material
- ◆ No Moving Equipment
- ◆ Easy & Speedy Installation
- ◆ Discharge to Garden or Surface



## REACTO<sup>®</sup> MBBR

Never before compact design, most powerful performance meeting highest standards with minimum maintenance and completely odor free. It can serve up to 222 inhabitants.

- ◆ Robust HDPE Material
- ◆ No Moving Equipment
- ◆ Easy & Speedy Installation
- ◆ Discharge to Garden or Surface

All plants provides results to meet statutory requirements as per International Standards EN 12566 – 3 and/or to meet standards set by MoEF, Govt. of India,  
**BOD ≤ 10 | COD ≤ 50 | TSS ≤ 10**